

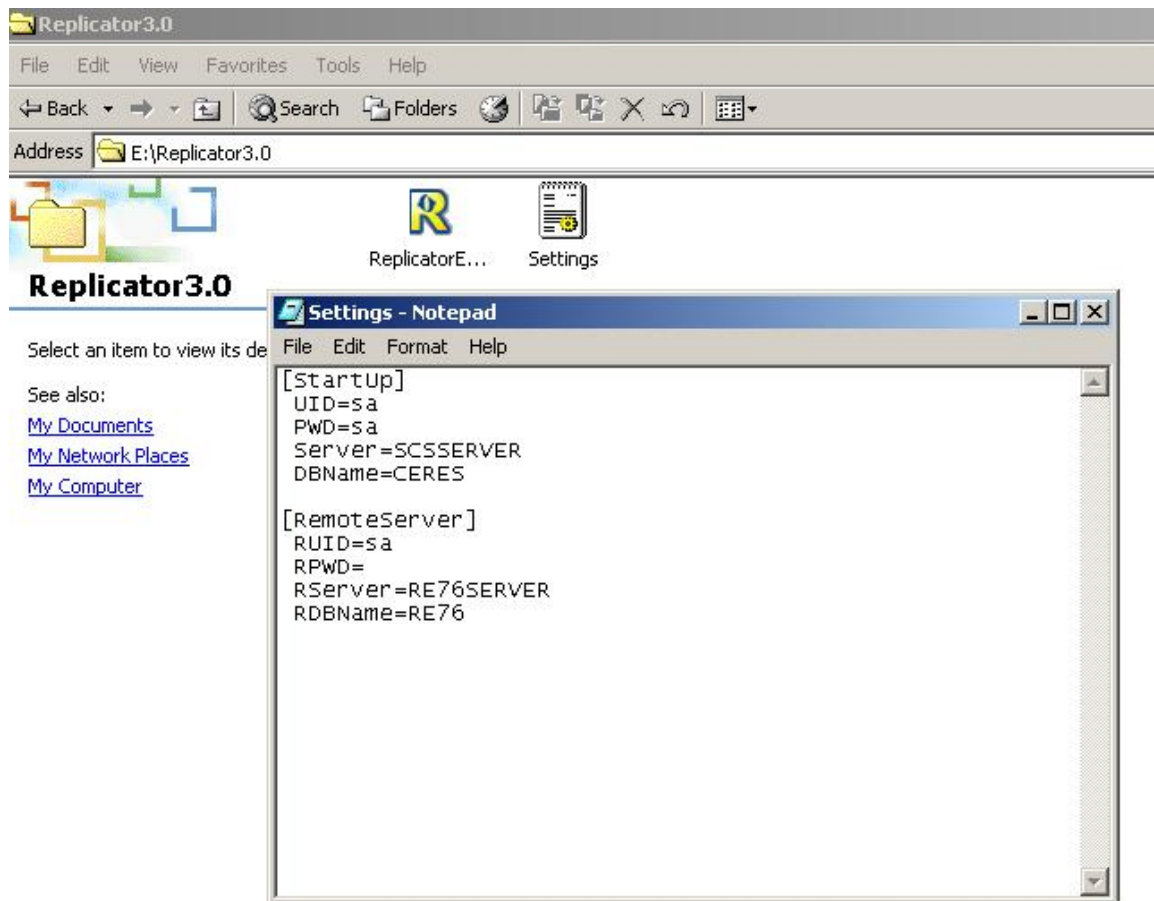
REPLICATOR

Date: 08-Oct-05

Version: 3.0

Installation:

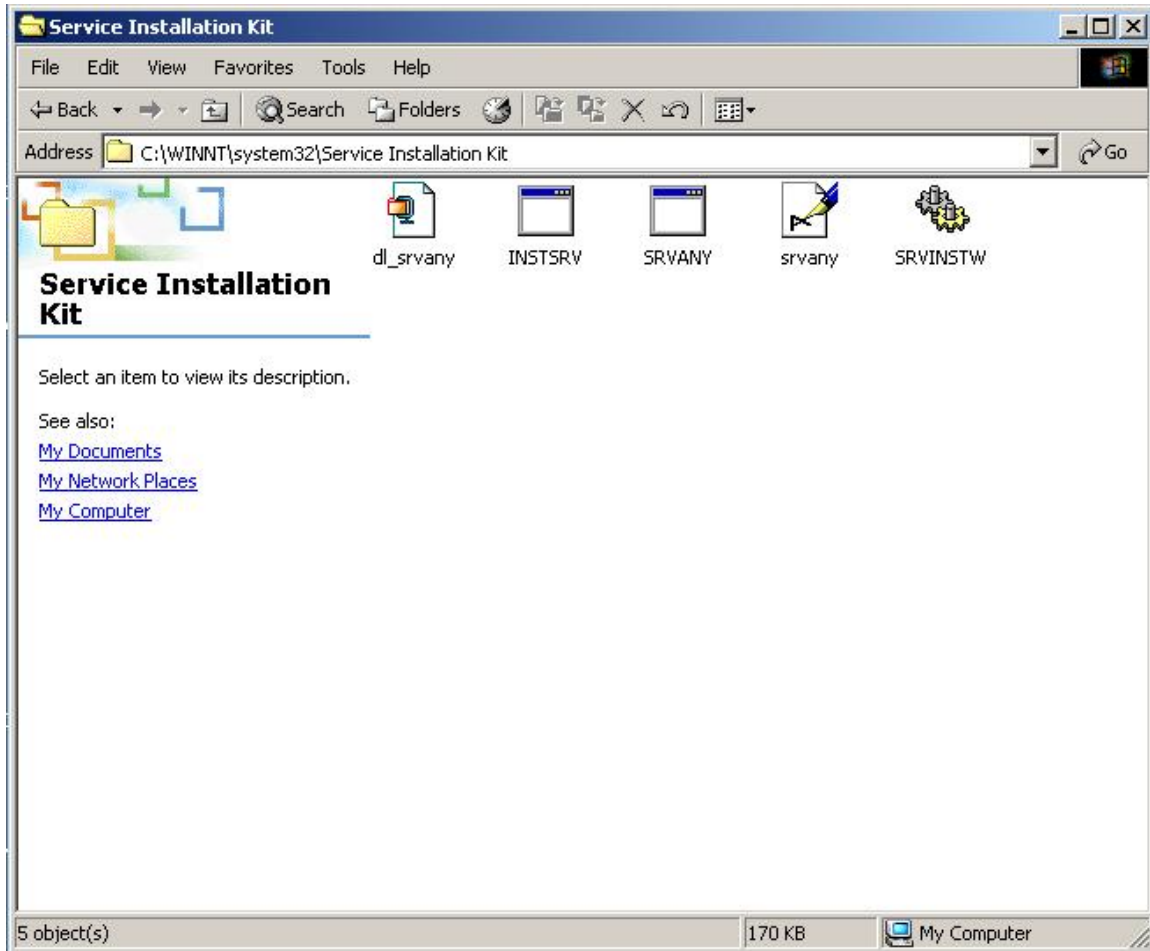
1. Execute the script file named *Replicator3.0_Script* in any of the database. And make sure that you need to login with the same database for configuring the source and destination details.
2. Create a folder and copy the *ReplicatorEngine.Exe* and *Settings.ini* files into the folder.
3. Check the Login details in the *Settings.Ini* file. In the first set you need to provide the server and database details where you have executed the script file *Replicator3.0_script*. In the second set you need to provide the logine details for *linked (Remote) server* if you had.



Adding Exe to Windows Service:

To add the ReplicatorEngine.exe to Windows Service please follow the steps below.

1. Unzip the folder “dl_srvany.zip” and place all the files into the same folder. I normally create a folder called *c:\winnt\system32\Service Installation Kit*.



2. Run *SrvInstw.exe*
3. Check *Install Service* radio box, click Next



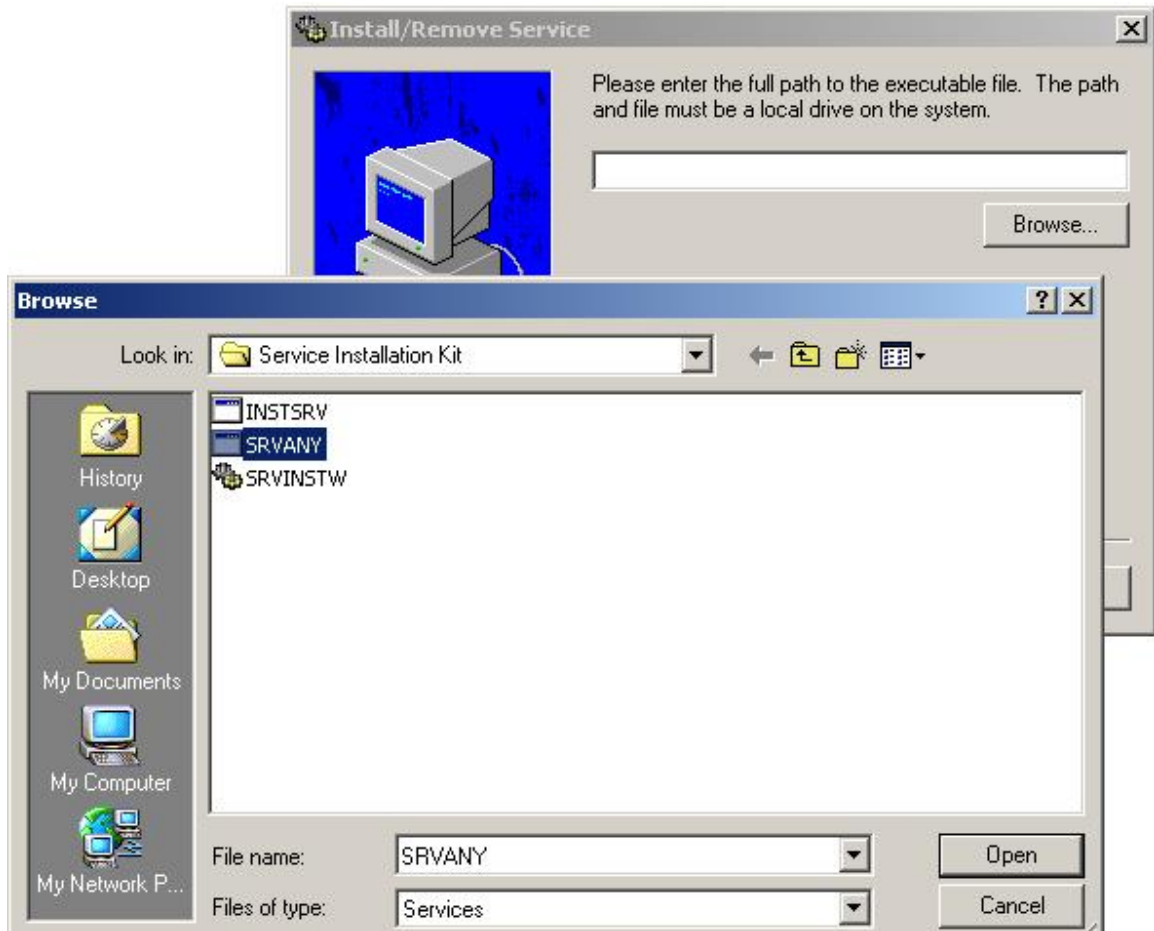
4. Check *Local Machine* radio box, click Next



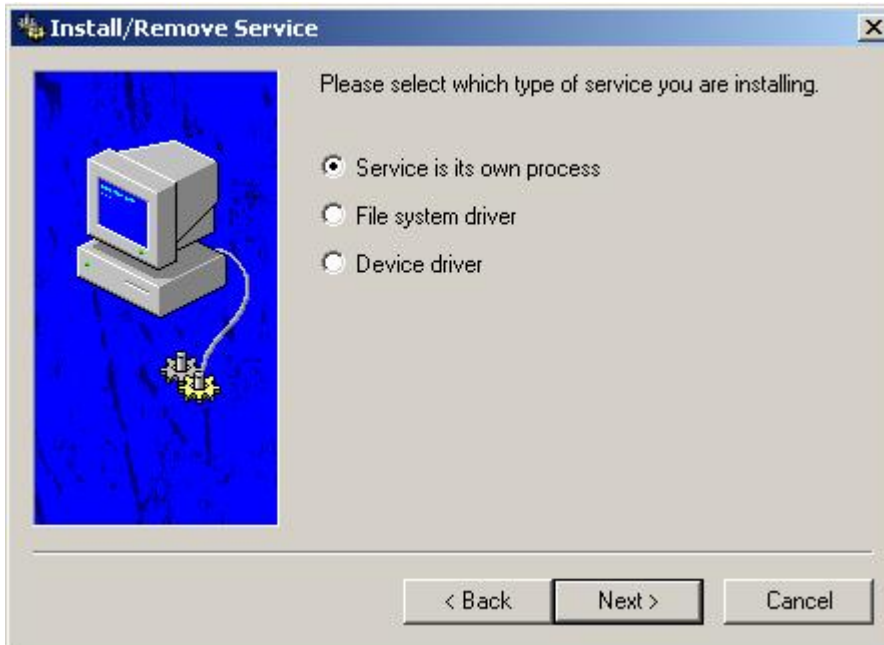
5. Enter the name for your service, click Next



6. Click *Browse* and select *srvany.exe* (which is in the same folder as *SrvInstw.exe*), then click *Next*



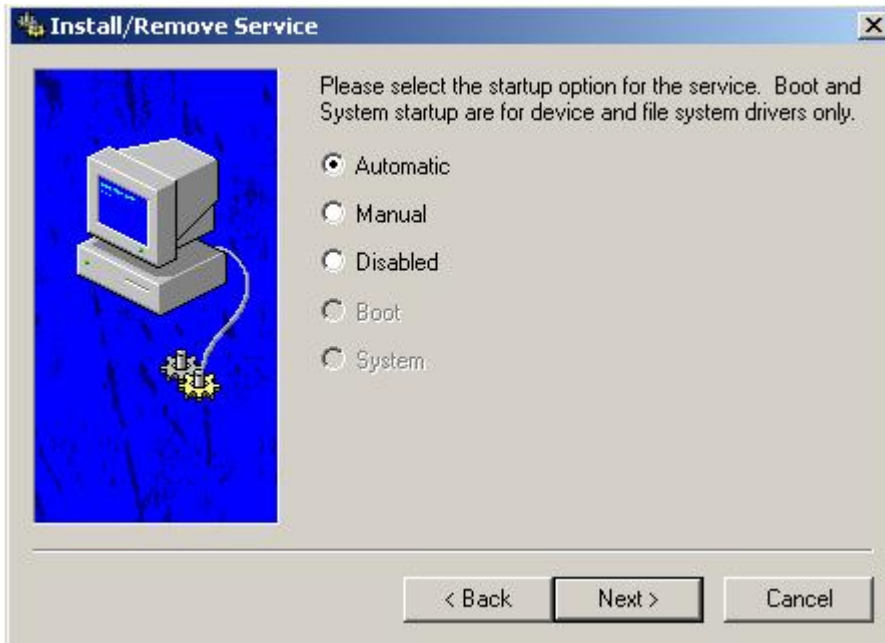
7. Click *Service is its own Process* radio box, click Next



8. Select what user account you want this service to run under. If this service is to have its UI, check the *Allow Service to Interact with Desktop* checkbox. Normally the services run under System Account



9. Select the startup option, click Next

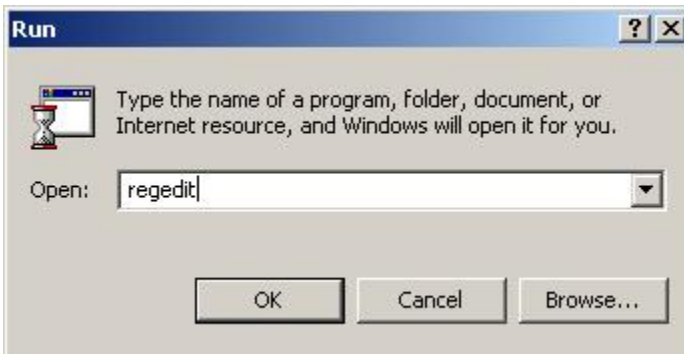


10. Click Finish. But you are not finished just yet

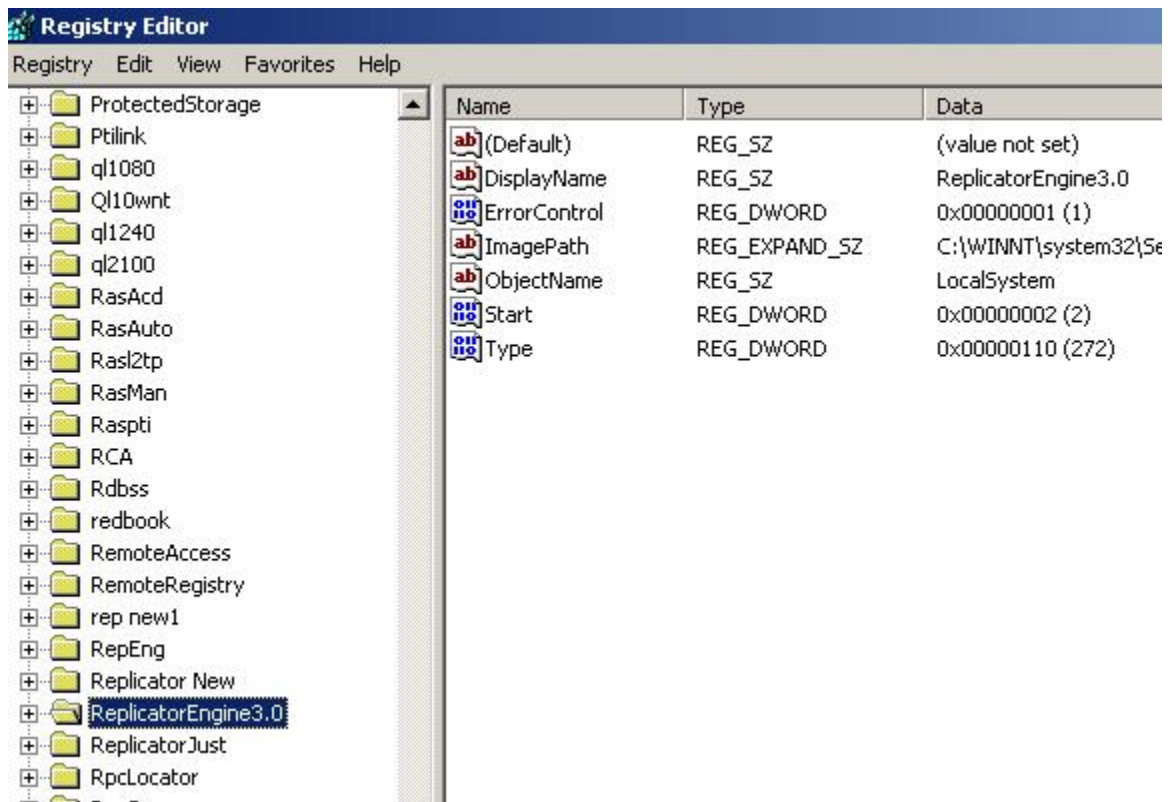


11. Open RegEdit. Navigate to

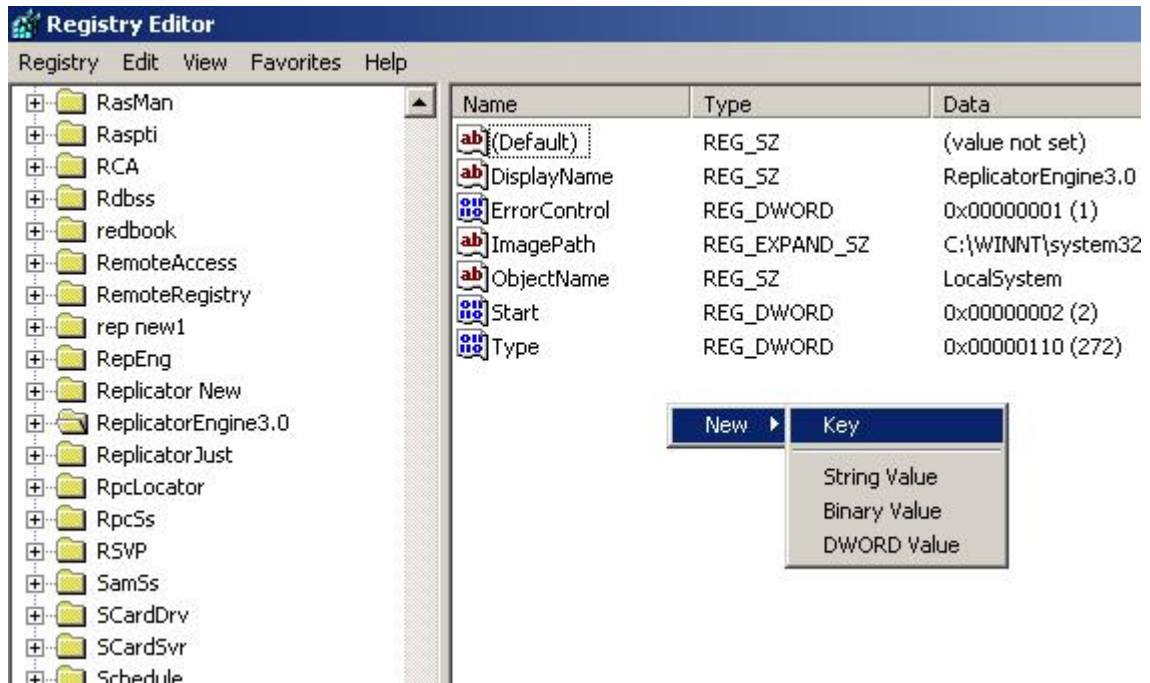
HKEY_LOCAL_MACHINE\SYSTEM\CurrentControlSet\Services



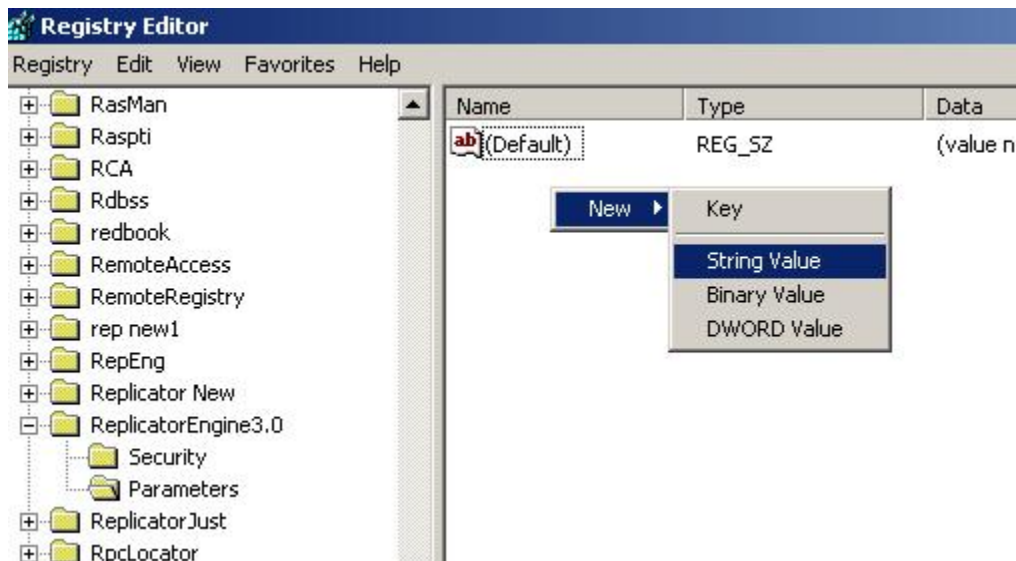
12. Locate the service you just created in the Services branch, click on it.



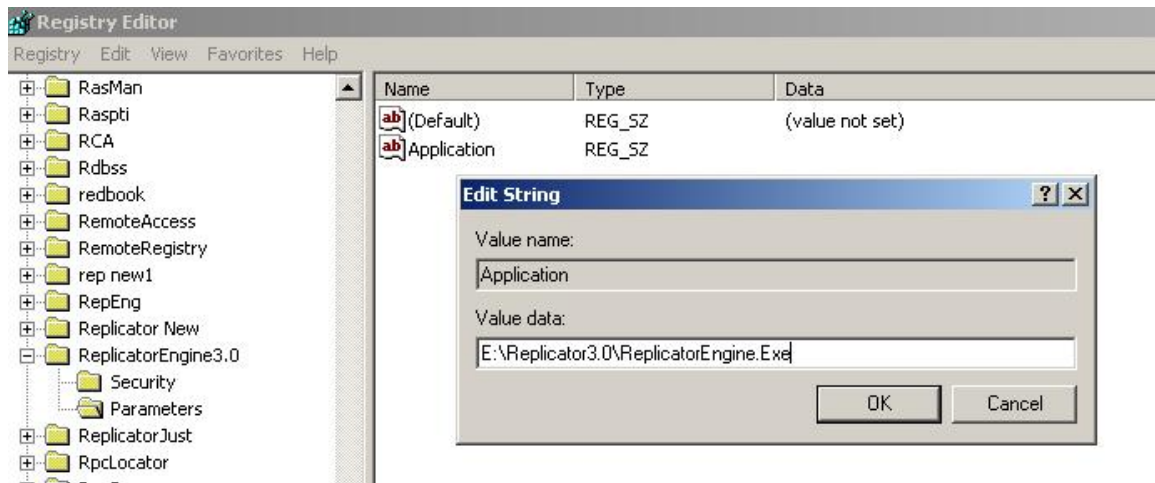
13. Create a new key called *Parameters*



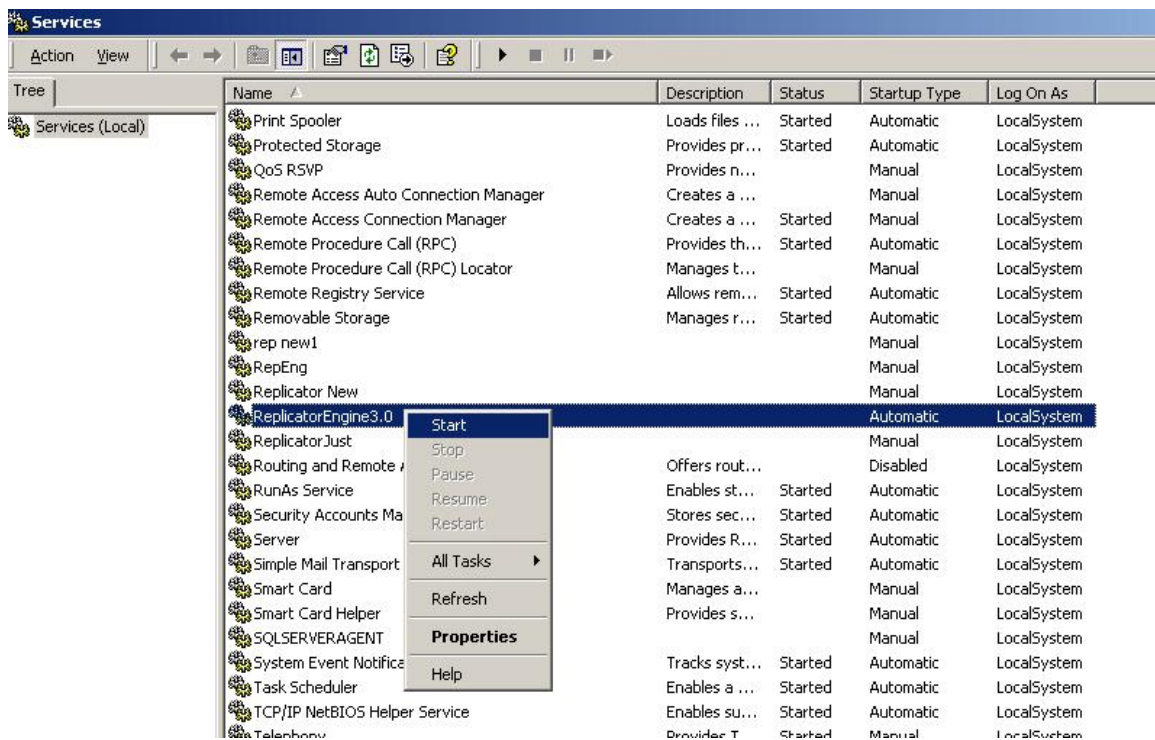
14. Click on *Parameters* and create a new string value called *Application*



15. Double-click on *Application* and set it equal to the full path of ReplicatorEngine.exe (e.g. c:\...\ReplicatorEngine.exe)



16. Now go to Services applet (Control Panel → Administrative Tools → Services) and you can start your service. Before starting the Engine make sure that you have configured source and destination details in Replicator_Configuration.



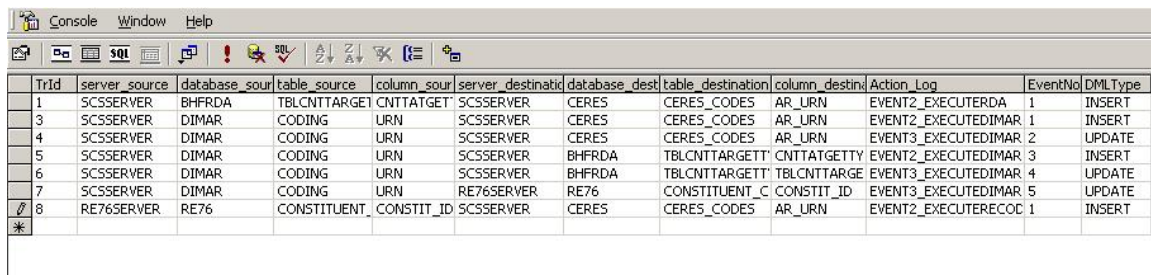
Configuring Source and Destination Details

You can configure source and destination details in two ways.

- i) Manually
- ii) Using Replicator1.5

Configuring Manually:

1. Open the table named *Replicator_Configuration* and provide the source and destination tables details along with the event to be performed in *Action_Log* column.
2. Check bellow for one stage of configuring details in *Replicator_Configuration* table



TrId	server_source	database_sour	table_source	column_sour	server_destinatic	database_dest	table_destination	column_destin	Action_Log	EventNo	DMLType
1	SCSSERVER	BHFRDA	TBLCNTTARGE1	CNTTATGET	SCSSERVER	CERES	CERES_CODES	AR_URN	EVENT2_EXECUTERDA	1	INSERT
3	SCSSERVER	DIMAR	CODING	URN	SCSSERVER	CERES	CERES_CODES	AR_URN	EVENT2_EXECUTEDIMAR	1	INSERT
4	SCSSERVER	DIMAR	CODING	URN	SCSSERVER	CERES	CERES_CODES	AR_URN	EVENT3_EXECUTEDIMAR	2	UPDATE
5	SCSSERVER	DIMAR	CODING	URN	SCSSERVER	BHFRDA	TBLCNTTARGETT	CNTTATGETTY	EVENT2_EXECUTEDIMAR	3	INSERT
6	SCSSERVER	DIMAR	CODING	URN	SCSSERVER	BHFRDA	TBLCNTTARGETT	TBLCNTTARGE	EVENT3_EXECUTEDIMAR	4	UPDATE
7	SCSSERVER	DIMAR	CODING	URN	RE76SERVER	RE76	CONSTITUENT_C	CONSTIT_ID	EVENT3_EXECUTEDIMAR	5	UPDATE
8	RE76SERVER	RE76	CONSTITUENT	CONSTIT_ID	SCSSERVER	CERES	CERES_CODES	AR_URN	EVENT2_EXECUTERECOD	1	INSERT

Configuring using Replicator1.5:

- 1: Enter the login details. Here you need to provide the details where you have executed the script file *Replicator3.0_Script*.



Replicator-Login

Connection:

Server: [local]

Database: ceres

Authorization:

Use Windows NT authentication

Use SQL Server authentication

Login: sa

Password: []

Login Cancel

2. Select source table and destination table and push into grid.

The screenshot shows the Replicator software interface with the following configuration:

- Replication Source Data:**
 - Source Server: SPARSH15
 - Database: DIMAR
 - Selected Tables: CampaignType, Classes, Coding (with sub-items: URN, Code, Data, Campaign, Segment, DateLast, OLStatus, IdCol)
- Replication Destination Data:**
 - Destination Server: SPARSH15
 - Database: CERES
 - Selected Tables: Book1, CERES_Actions, CERES_Codes (with sub-items: Code ID, AR_URN, Code, Data, Campaign, Segment, SourceRef, DateEntere)

Below the configuration panels is a table listing the source data:

S.NO	SOURCE SERVER	SOURCE DATABASE	SOURCE TABLE	SOURCE CO
1	SPARSH15	DIMAR	Coding	URN
2	SPARSH15	DIMAR	Coding	Code
3	SPARSH15	DIMAR	Coding	Data
4	SPARSH15	DIMAR	Coding	Campaign
5	SPARSH15	DIMAR	Coding	Segment
6	SPARSH15	DIMAR	Coding	DateLast
7	SPARSH15	DIMAR	Codina	OLStatus

3. Provide the Event details for corresponding mapping details.

Enter Sql Query

DML TYPE :

EVENT2_EXECUTEDIMAR

4. Similarly configure the other destination tables for the event.

The screenshot shows the Replicator Configurator interface. It is divided into two main sections: 'Replication Source Data' and 'Replication Destination Data'. Below these sections is a summary table.

Replication Source Data:

- Source Server: SPARSH15
- Database: DIMAR
- Selected Tables: CampaignType, Classes, Coding (with sub-items: URN, Code, Data, Campaign, Segment, DateLast, OLStatus, IdCol)

Replication Destination Data:

- Destination Server: SPARSH15
- Database: BHFRDA
- Selected Tables: CreateTime, EditUser, EditTimeSt, TBLCntTargetTyp (with sub-items: CntTargetT, ContactID, TargetType, Data, CreateUser, CreateTime, EditUser)

Summary Table:

S.NO	SOURCE SERVER	SOURCE DATABASE	SOURCE TABLE	SOURCE COLU
1	SPARSH15	DIMAR	Coding	URN
2	SPARSH15	DIMAR	Coding	Code
3	SPARSH15	DIMAR	Coding	Data
4	SPARSH15	DIMAR	Coding	Campaign
5	SPARSH15	DIMAR	Coding	Segment

