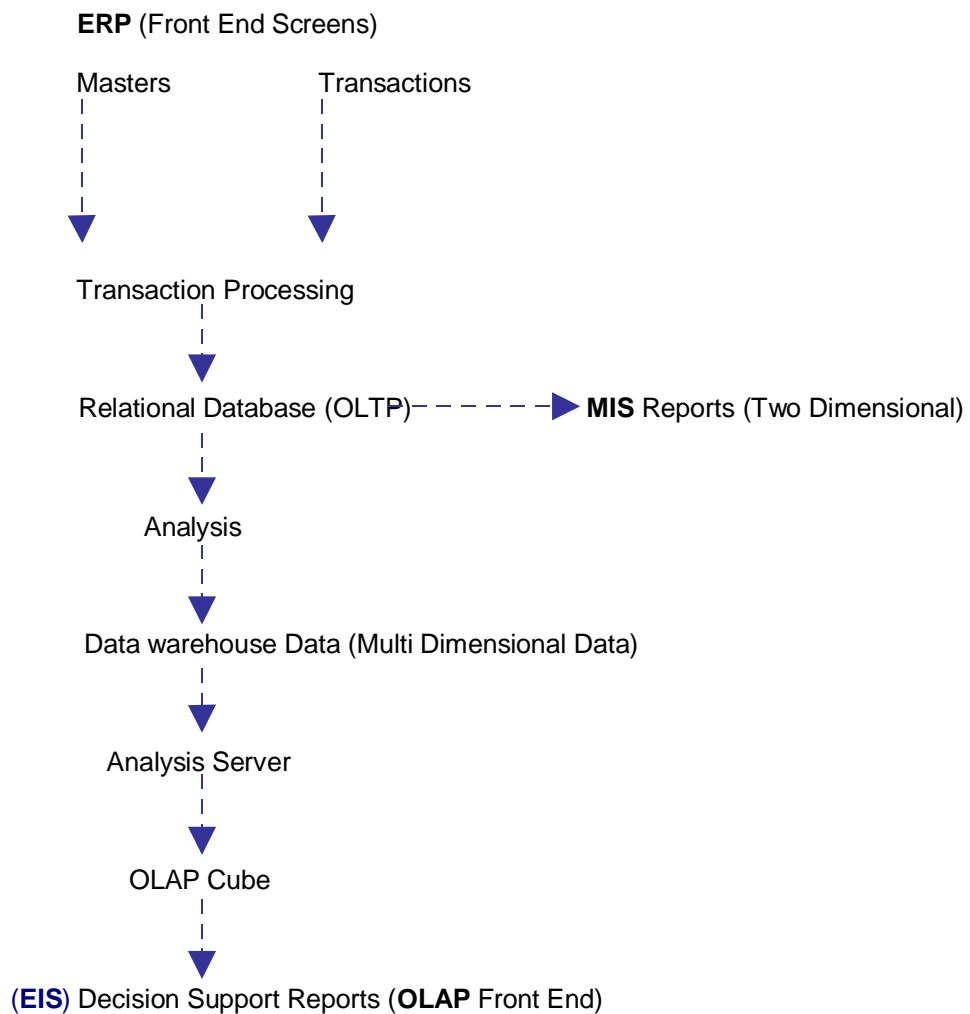


Online Analytical Processing

Features

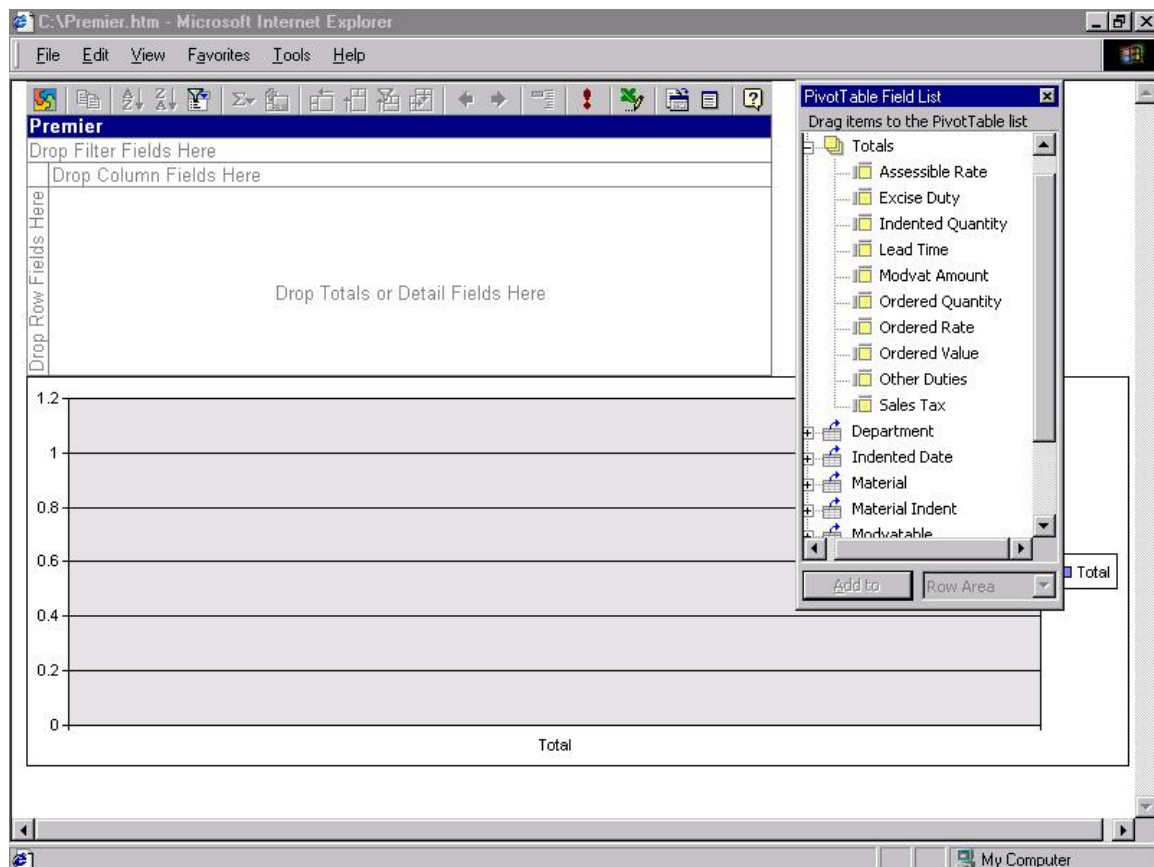
- User defined formats through Drag and Drop dimensions
- Can be Exported to Excel
- Auto refresh of Data
- Web Enabled
- Quick Retrieval for analysis and decision making through both Data and Graph
- Drill Down data through dimension levels
- Drill Up data through dimension levels
- Data can be Filtered through Dimensions
- Different types of charts (like Pie chart, Bar Chart, Column Chart etc)

DATA FLOW LAYOUT



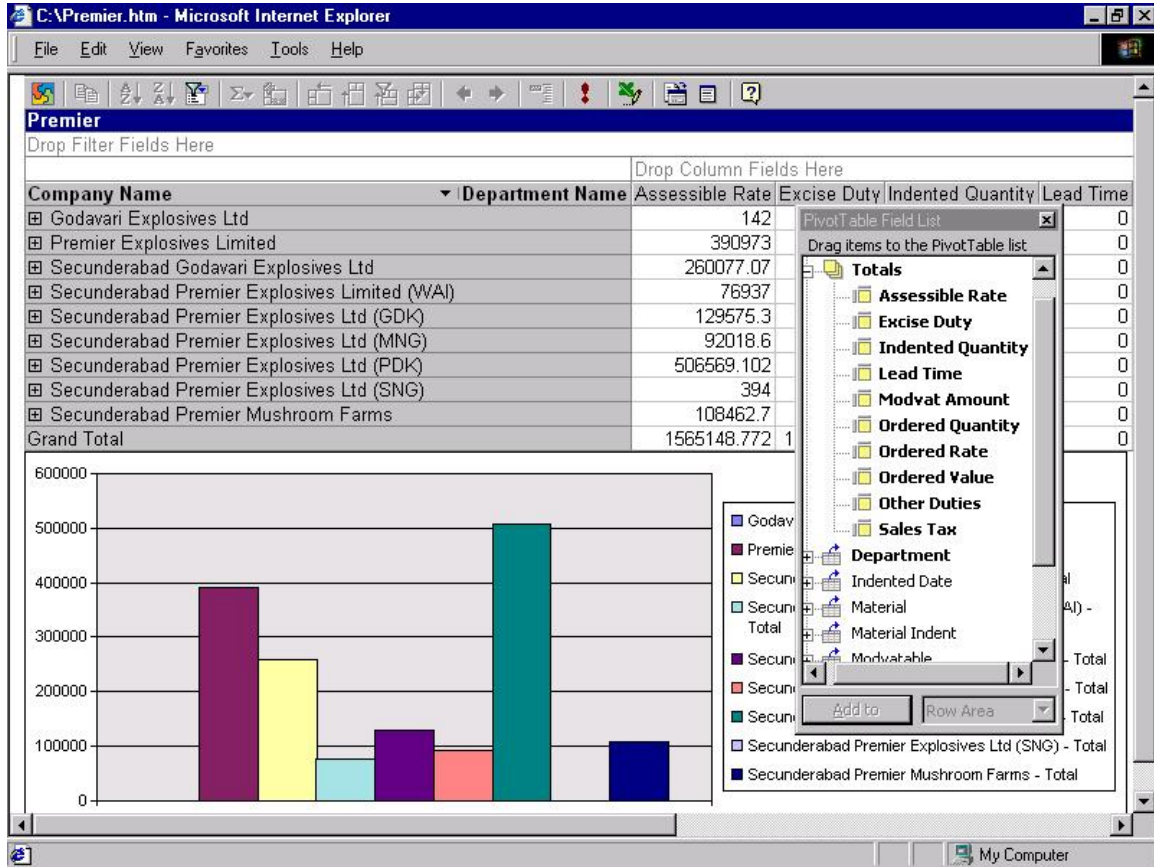
The Samples are based on Standard Purchase Module to analyze the functioning of complete purchase department in all directions i.e. Typically We will examine the results (Measures) namely Assessable Rate, Excise Duty, Indented Quantity, Lead Time for Purchase, Modvat Amount, Ordered Quantity, Ordered Rate, Ordered Value, Other Duties, Sales Tax with respect to various dimensions like Department wise, Material wise, Supplier wise (Supplier Country, Supplier State, Supplier City, Supplier Name) Company wise (Group company), Date wise (Year, Quarter, Month, Date) , Modvat applicable wise, Indent wise, Purchase Order wise etc.

Purchase

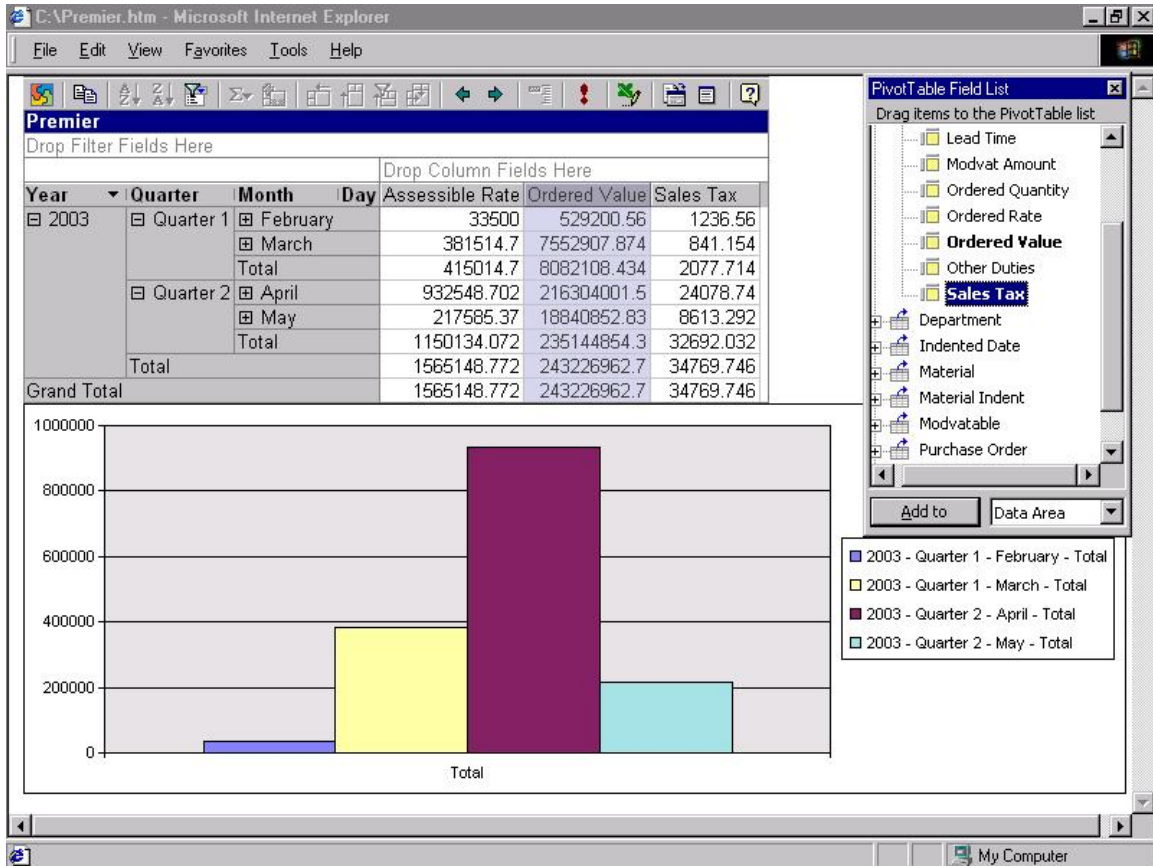


* Drag and Drop the Dimensions (Like Department, Material, Indented Date, Indent wise) in **Column, Row and Filter** fields. Drag the Measures (Like Assessable Rate, Ordered Value, Other Duties, Sales Tax) in **Totals or Detail** Fields. We can drag and drop any of the dimension, measure combination to analyze.

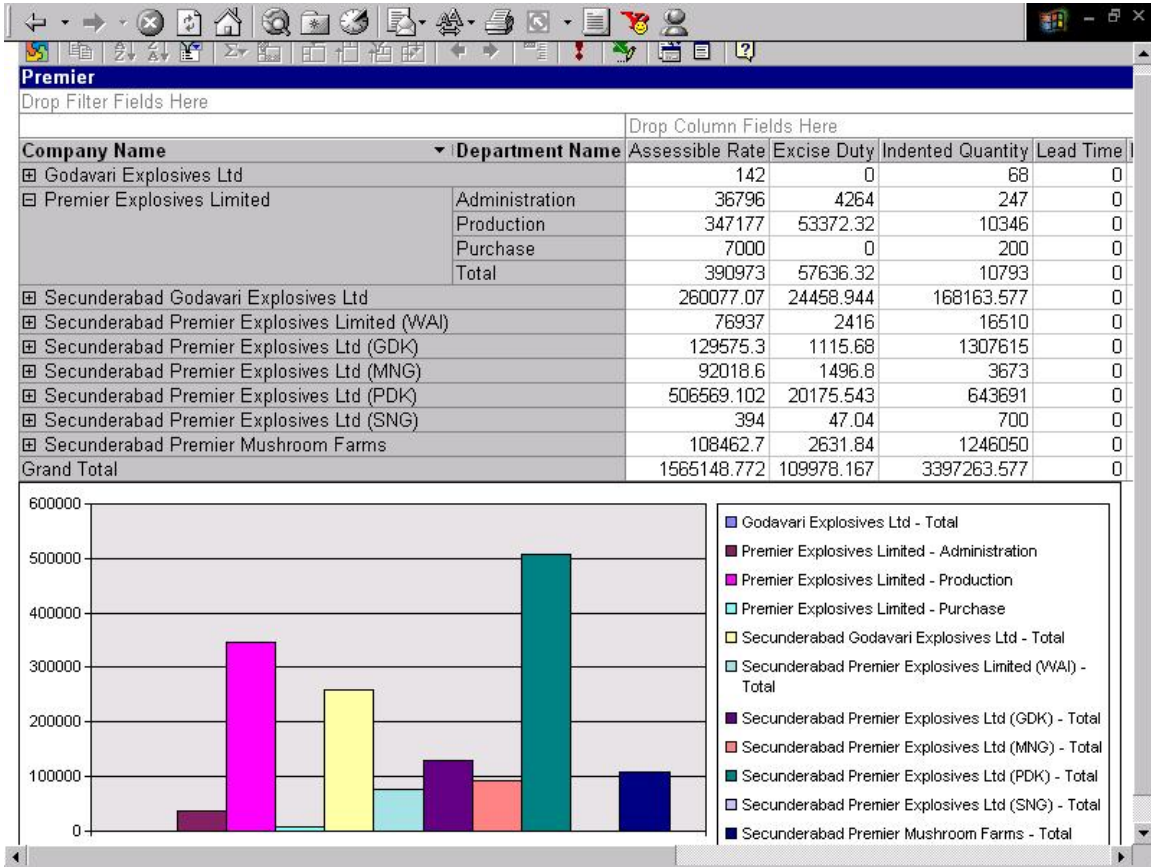
Companywise Purchases



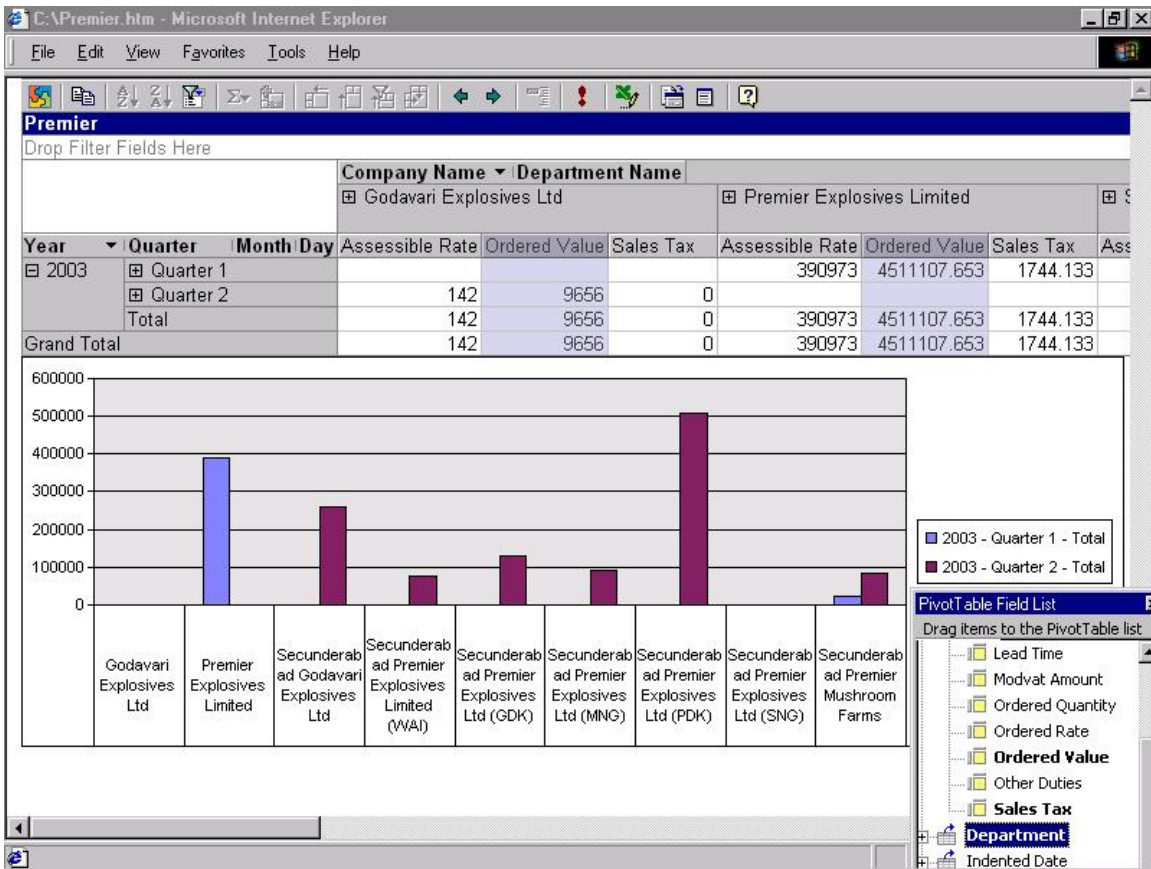
Monthwise Order Value and Sales Tax along with Rate



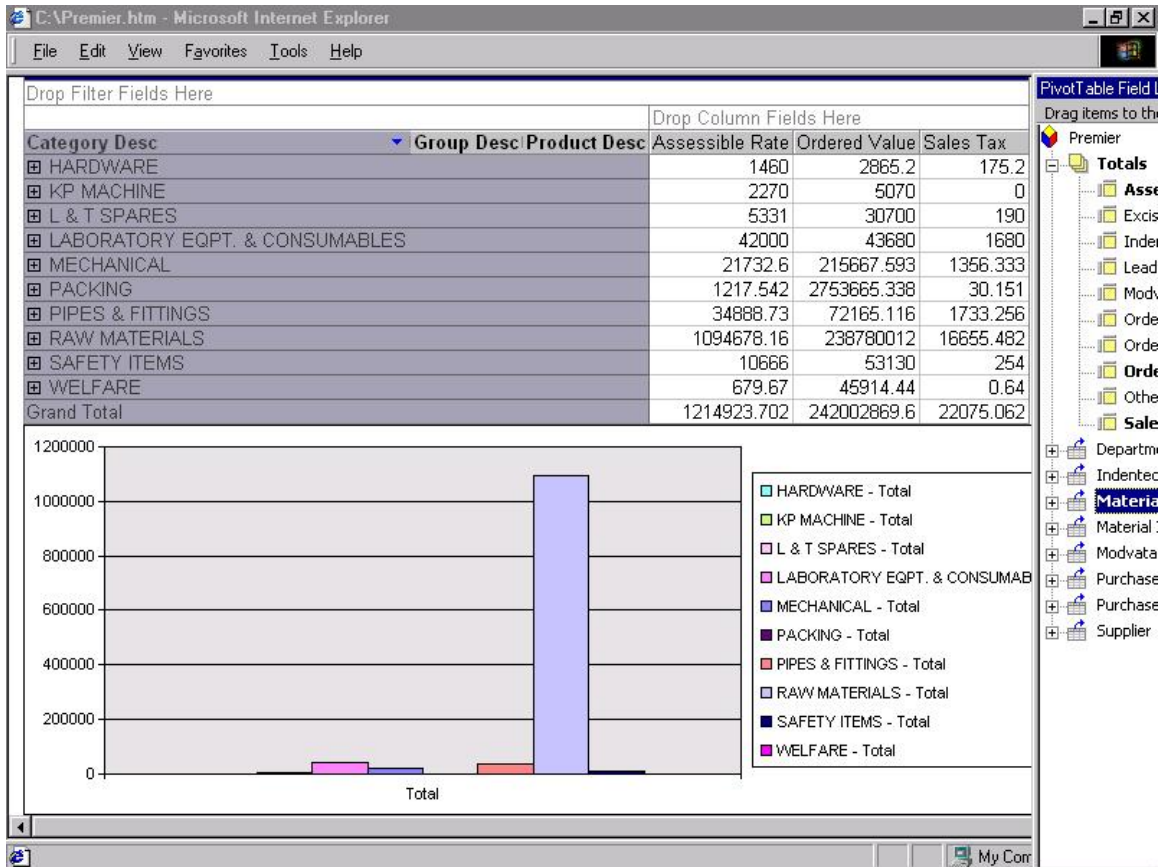
Company/Department wise Purchases



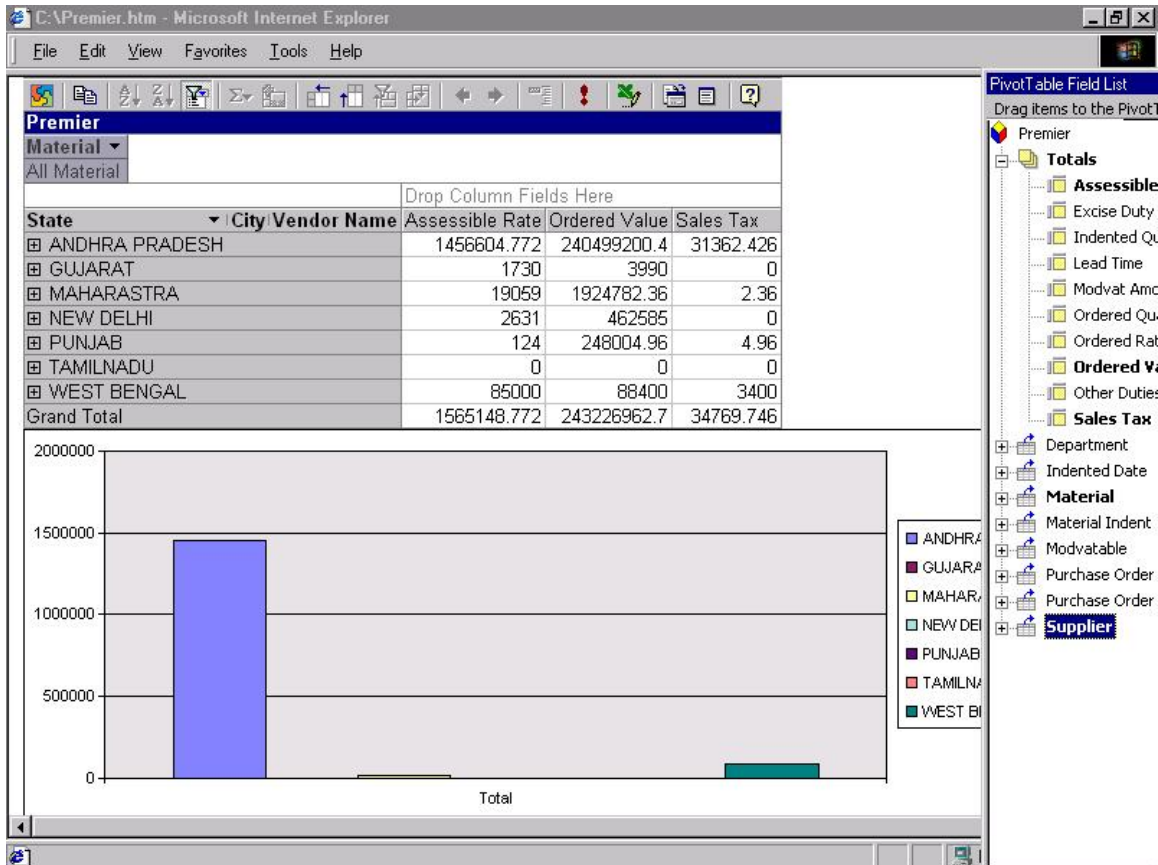
Company wise (within the Group) Quarterly Purchases



Material Category wise Purchase



Area wise Purchase Value



Supplier Wise Purchase Value

