

CroppingTool

This Tool allows to import comma separated text file that contains field with “record number”, field with the “path” to the image , field with “path to thumbnail Image” and two fields to record the Cropping information in to “x” and “y” field.

The Thumbnail of image is displayed on the screen. The image is cropped using a box that will be able to move and be size proportionally. The cropping information will be recorded in the data from each image.

If you have the Thumbnail Image of Size 500 * 600 then you can see the image as big.

This tool supports .Csv file which having the fields of RecordNo. ImagePath, ThumbMailImagePath, Cropping.

Don't place the Csv file in Subfolders.

The Cropping information is Recording as follows

Cropping = ..., ±X/±Y/Scale,...

where X moves the image to the left or right, Y moves the image up and down and scale is the zoom factor expressed as a percentage where 100%.

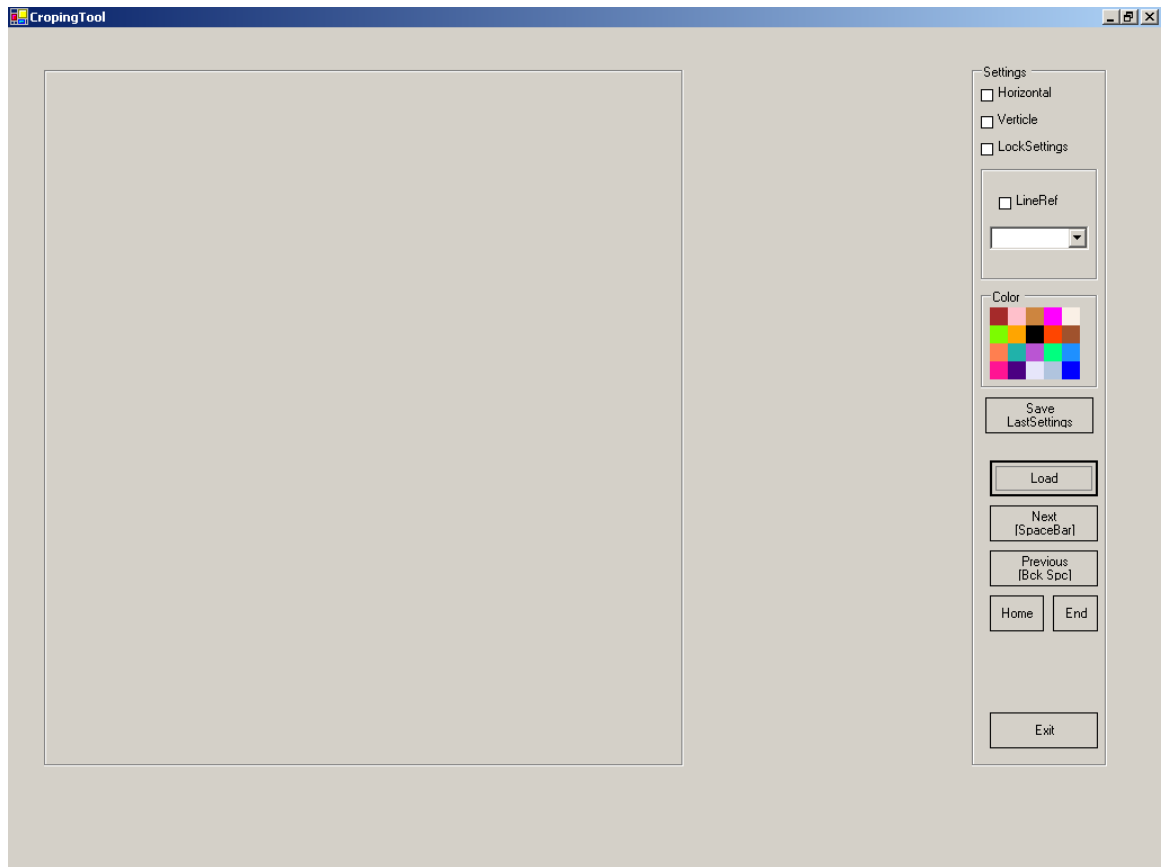
BY default our Application supports Zoom percentage of 101%.

Before Recording Cropping Information

	A	B	C	D
1	RecNum	ImagePath	ThumbMailImagePath	Cropping
2	100001	C:\Docume	C:\Documents and Settings\Administrator\Desktop\Images\100001.jpg	-217\94\101
3	100002	C:\Docume	C:\Documents and Settings\Administrator\Desktop\Images\100002.jpg	-118\148\101
4	100003	C:\Docume	C:\Documents and Settings\Administrator\Desktop\Images\100003.jpg	-118\148\101
5	100004	C:\Docume	C:\Documents and Settings\Administrator\Desktop\Images\100004.jpg	
6	100005	C:\Docume	C:\Documents and Settings\Administrator\Desktop\Images\100005.jpg	-118\148\101
7	100006	C:\Docume	C:\Documents and Settings\Administrator\Desktop\Images\100006.jpg	-122\94\101
8	100007	C:\Docume	C:\Documents and Settings\Administrator\Desktop\Images\100007.jpg	
9	100008	C:\Docume	C:\Documents and Settings\Administrator\Desktop\Images\100008.jpg	
10	100009	C:\Docume	C:\Documents and Settings\Administrator\Desktop\Images\100009.jpg	
11	100010	C:\Docume	C:\Documents and Settings\Administrator\Desktop\Images\100010.jpg	
12	100011	C:\Docume	C:\Documents and Settings\Administrator\Desktop\Images\100011.jpg	
13				

After Recording Cropping Information

	A	B	C	D
1	RecNum	ImagePath	ThumbMailImagePath	Cropping
2	100001	C:\Docume	C:\Documents and Settings\Administrator\Desktop\Images\100001.jpg	-217\94\101
3	100002	C:\Docume	C:\Documents and Settings\Administrator\Desktop\Images\100002.jpg	-118\148\101
4	100003	C:\Docume	C:\Documents and Settings\Administrator\Desktop\Images\100003.jpg	-118\148\101
5	100004	C:\Docume	C:\Documents and Settings\Administrator\Desktop\Images\100004.jpg	
6	100005	C:\Docume	C:\Documents and Settings\Administrator\Desktop\Images\100005.jpg	-118\148\101
7	100006	C:\Docume	C:\Documents and Settings\Administrator\Desktop\Images\100006.jpg	-122\94\101
8	100007	C:\Docume	C:\Documents and Settings\Administrator\Desktop\Images\100007.jpg	-264\186\101
9	100008	C:\Docume	C:\Documents and Settings\Administrator\Desktop\Images\100008.jpg	-303\259\101
10	100009	C:\Docume	C:\Documents and Settings\Administrator\Desktop\Images\100009.jpg	-141\191\101
11	100010	C:\Docume	C:\Documents and Settings\Administrator\Desktop\Images\100010.jpg	-319\263\101
12	100011	C:\Docume	C:\Documents and Settings\Administrator\Desktop\Images\100011.jpg	-121\187\101
13				

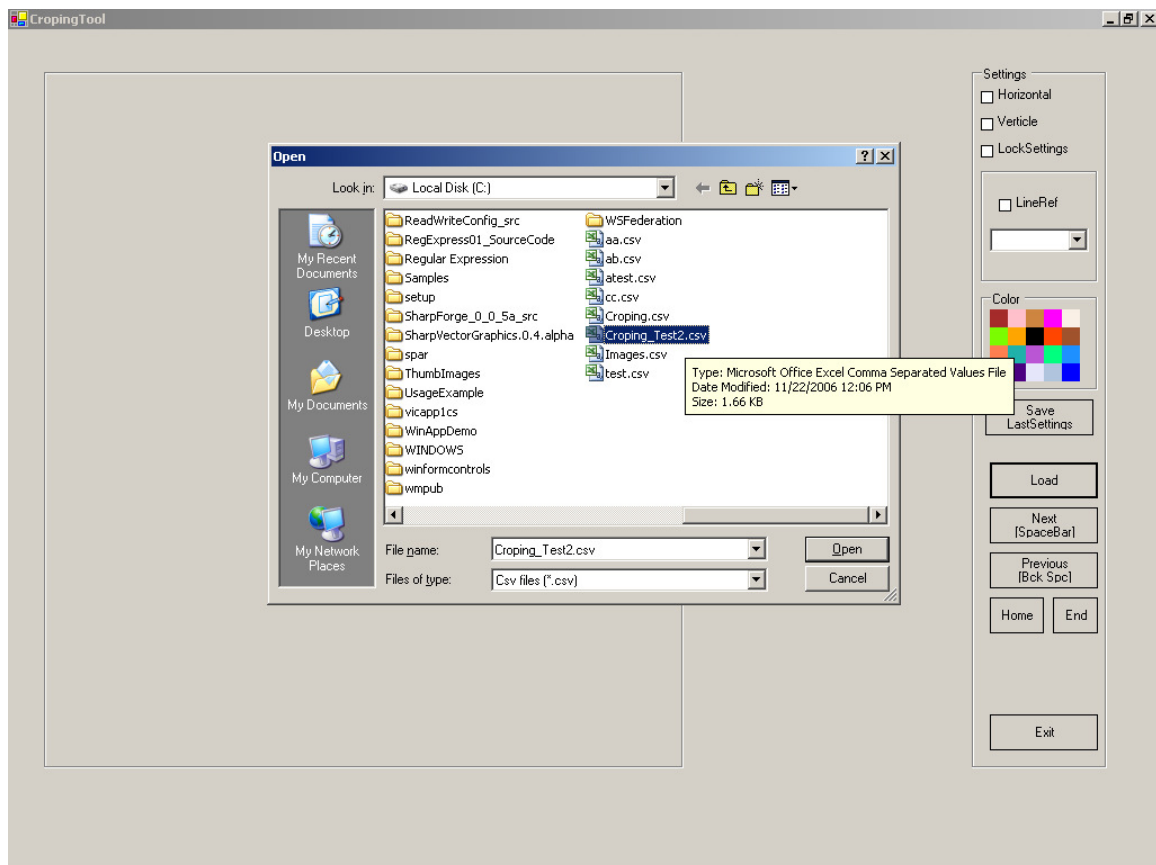


1. Click on Load button, it will show the Browse menu on that we have to select only .Csv file which is having the fields of RecordNo., ImagePath, Cropping.

Before selecting the Csv file we have to check these situations

- If Csv file is already opened we have to close that file.
- We have to check If Csv file is having properFile paths.
- This Tool Supports Csv file which is having Following fields.Please check these fields in Csv file

RecNum
ImagePath
ThumbMailImagePath
Cropping



2. After loading the .Csv file initially by default it will showing the first record in the .Csv file.

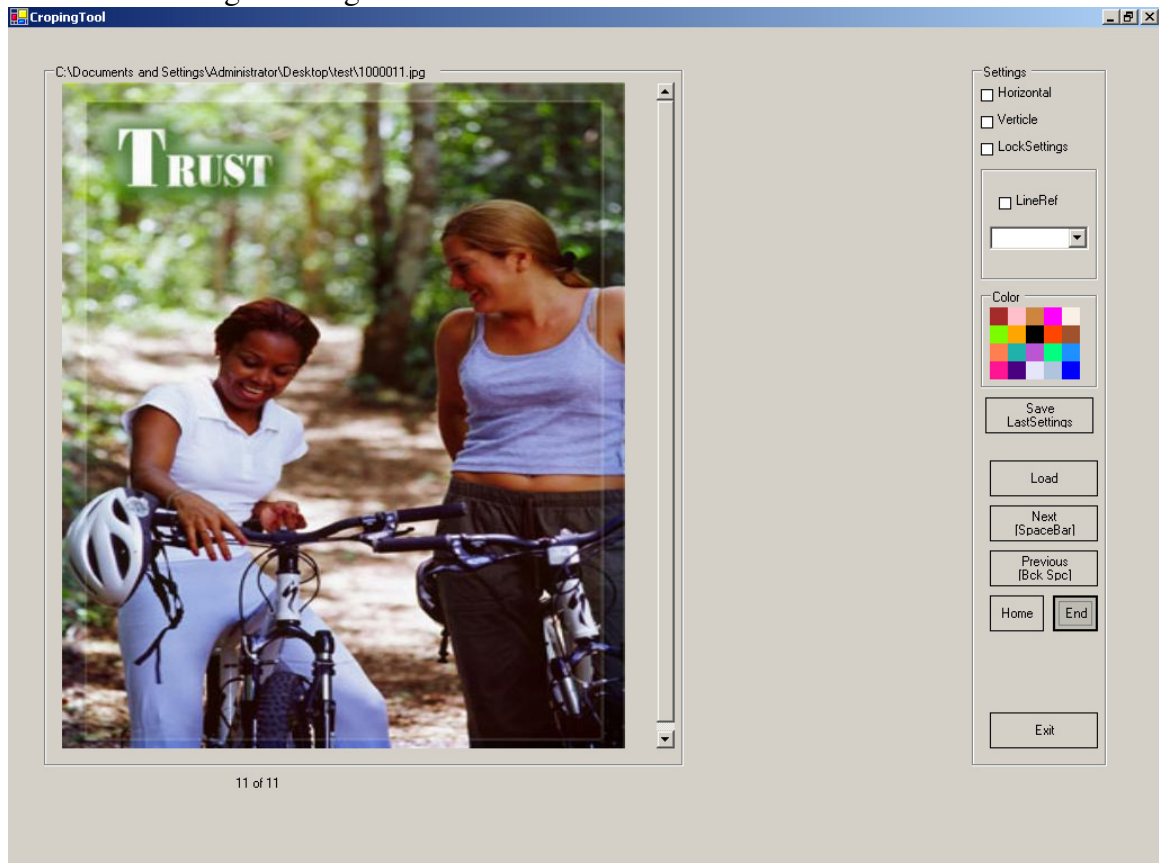
Here having **Next [spacebar]** to go to Next Record in the list.

Previous [Backspace] to go to Previous Record in the list.

Home to go to the First Record in the list.

End to go to the Last Record in the list.

Color panel is available here.If you want to select the particular color Click on Specific color and the drag the Image.

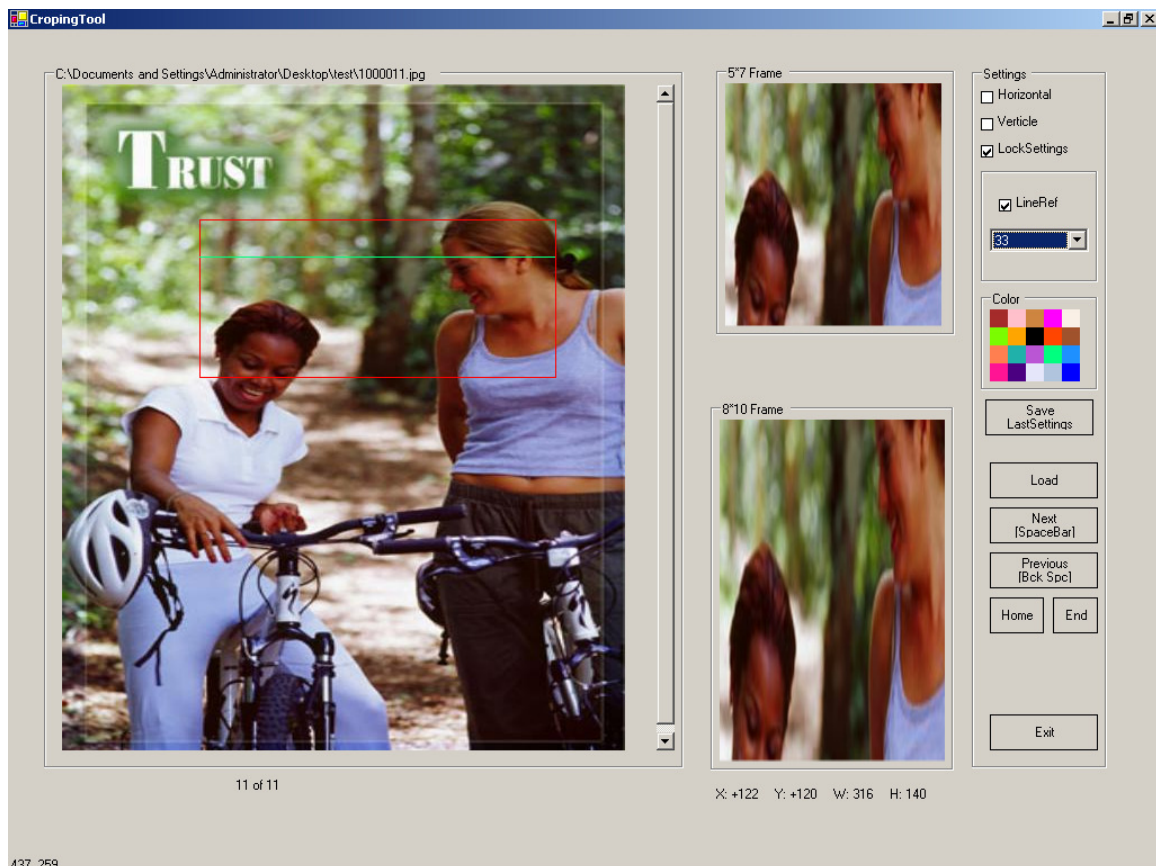


3. Below screen showing the selected part of Image by rectangle frame. Cropping is activating only if your mouse pointer is upside of the image.
If you want to change the color of Rectangle click on Colors panel and then start dragging your mouse on Image.
After dragging the cropped values are stored on to the Csv file.



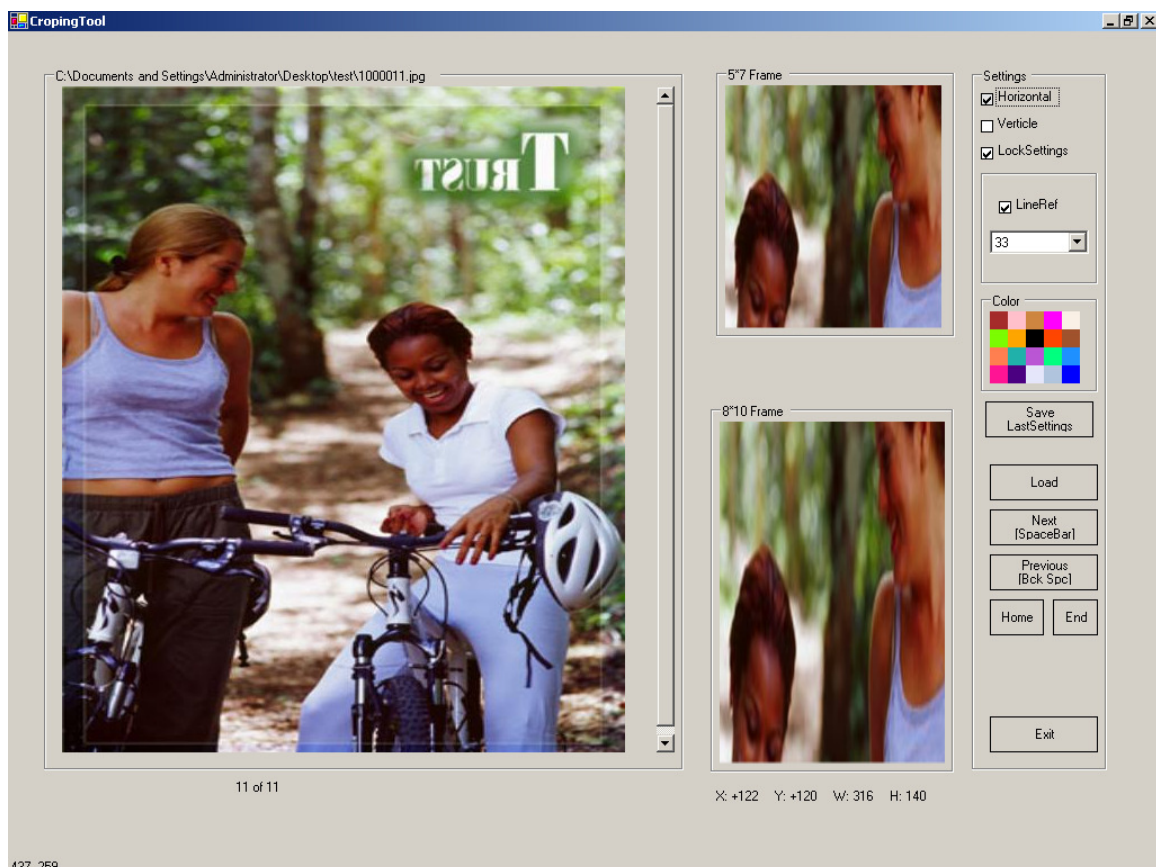
4. The cropped Image was displayed in right.If we wants to Lock setting Click on LockSettings button.
If we Lock the settings that settings are applicable to Whole application up to uncheck LockSettings.

Below screen shows the HairLine of Image.If you wants to display Hairline check on LineRef Checkbox.To adjust Hairline positions use Up and Down arrows or select appropriate value from dropdownlist.

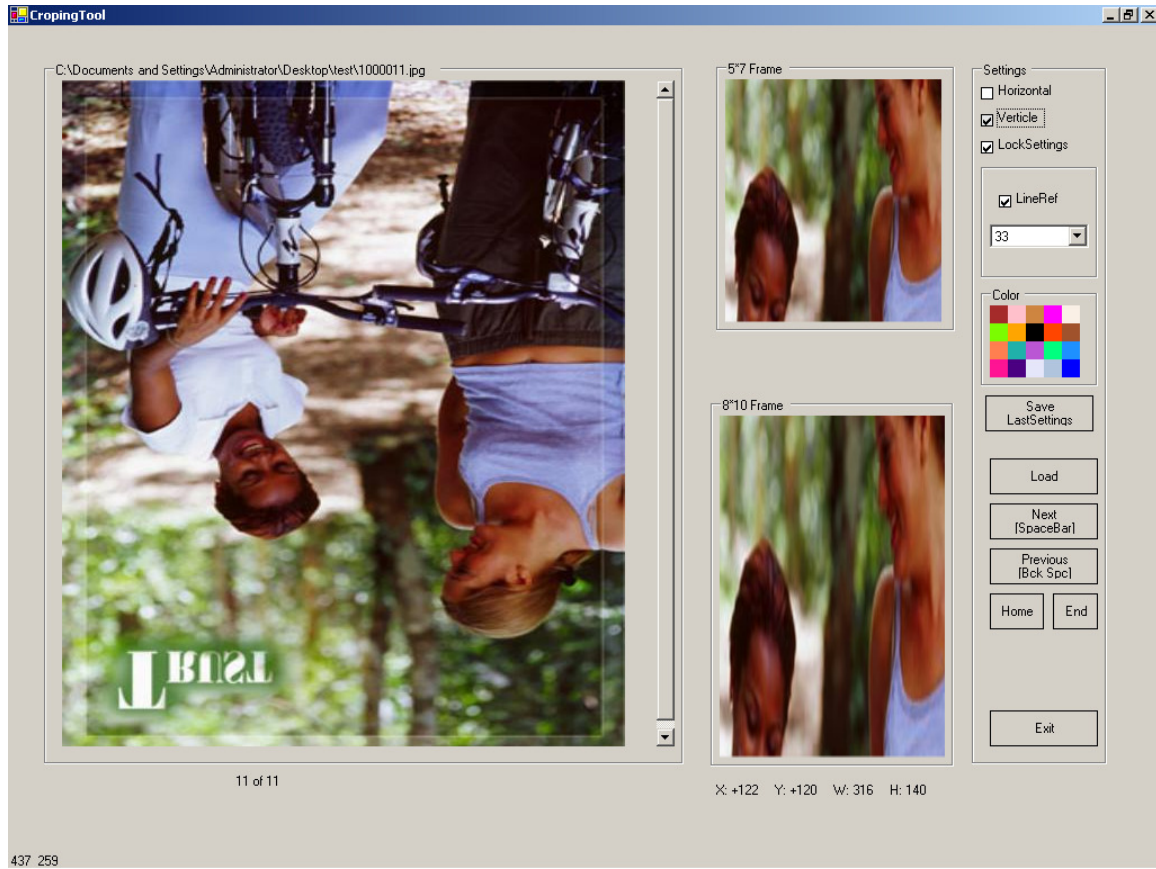


437 259

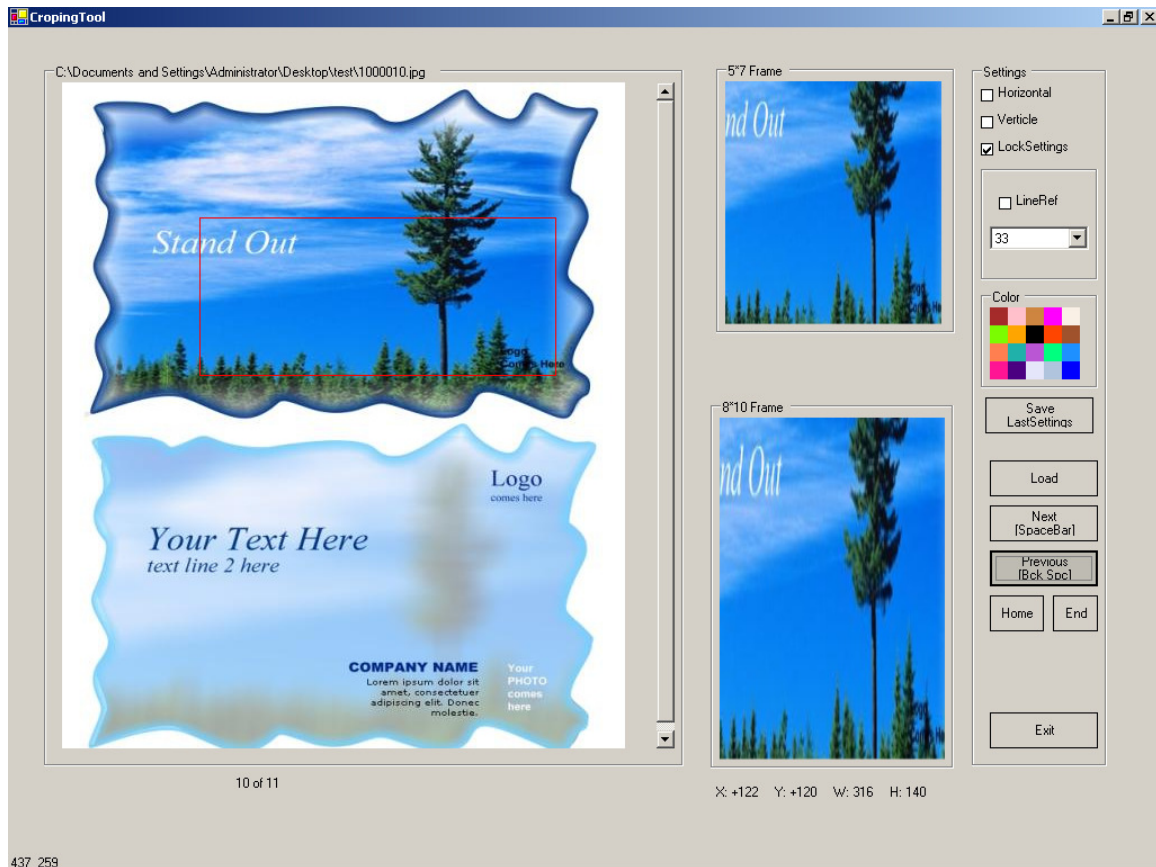
5. If we wants to crop the Horizontal pface of the Image we have to check on the Horizontal checkbox. Then the image is showing in Horizontal.



6..If we wants to crop Vertical phace of the Image. We have to check on the Vertical checkbox.Then the image is showing vertically.



7. Below screen displayed the next Image in the Folder.



8. If you wants to save the LockSettings Click on SaveLastSettings button.

9. At last click on Exit button to close application.